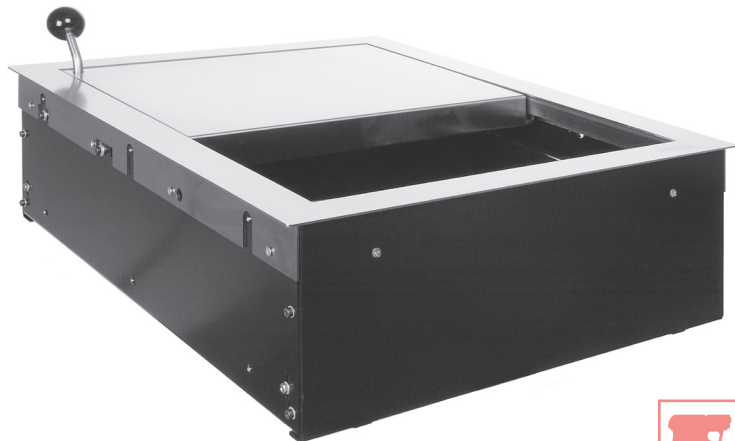
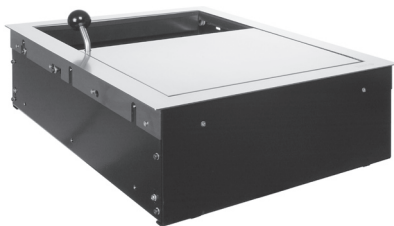


## Modell 20 spät



### Use

Model 20 spät sliding tray comprises a hatch with a tray that moves in opposite directions and comes ready for installation. Ideally it should be used as an indoor counter unit, especially on late or night shifts. The unit is suitable for handing over files, documents, rolls of money and similar objects..



### Safety and features

- Sliding deep tray for handing over larger items up to 100 mm high, such as files with 80 mm spines.
- Automatic lock at full extension on either side. Lock can only be released by the operator behind the counter by using the lever.
- It is not possible to reach through the hole while the deep tray is sliding or manipulate the mechanism.
- Offers firearms protection, capable of withstanding heavy handgun fire eg, up to 44 Magnum. Has received FB4 certification from the firearms licensing authority.
- Model 20 fulfils German UVV regulations.

### Materials and use

- The cover is made out of a 1 mm thick stainless steel plate.
- Carriage and deep tray made out of a 3 mm steel plate with black-brown powder coated cover.
- Casing made out of 2mm brushed stainless steel.
- All metal parts have been produced using state-of-the-art precision laser cutting technology for ultimate quality.
- Model 20 spät is best suited to internal use, especially for late or night shifts.
- The hatch unit requires no maintenance. No need for cleaning or lubrication.



## Sliding trays

## Outer dimensions

(all measurements in mm)

Width	450
Depth	600
Height	174

## Carriage clearance

Width	370
Depth	310
Height	100

## Deposit opening

Width	370
Depth	215

## Mounting, counter section

Flush with surface

600 x 450 x 2
590 x 438

## Weight

29,8kg

## Miscellaneous

- The Model 20 variant comes with a flat tray for handing over flat items such as files, documents, passports and rolls of money up to 30 mm high. This replaces the cover and has been specially designed for daytime use .
- Available with stainless steel top surface on request.
- Other colours available on request
- Fire protection up to F90 available on request.

## Walter Wurster GmbH

Heckenrosenstraße 38  
D-70771 Leinfelden-Echterdingen  
Germany

Telefon: +49 (0) 711 / 9 49 62-0

Telefax: +49 (0) 711 / 7 97 72 90

e-mail: kontakt@IdeeninBlech.de

internet: www.IdeeninBlech.de

## Modell 20 spät

## Installation and dimensions

The sliding tray comes ready for mounting in prepared counter sections. The tray is mounted by inserting it into the recess in the counter from above. With wooden counters the tray can be fitted flush with the counter. With stone counters it is placed on top. Consideration must be given to access requirements and the possible need to remove the unit later in the unlikely event of repairs.

