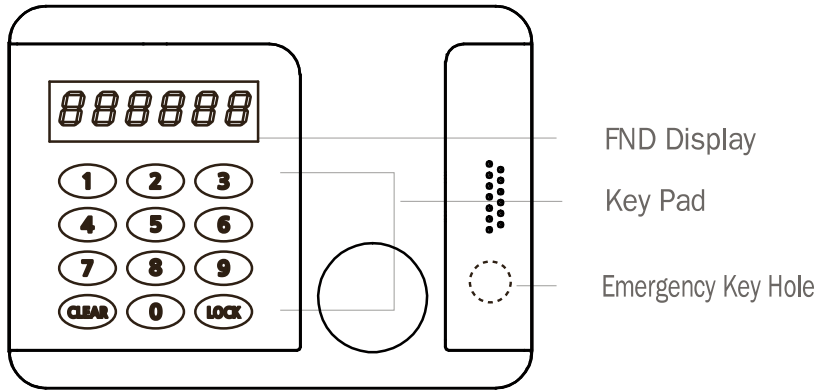




■ Digital Lock



■ Display

nn0888 : Input new password.

088888 : Safe is open.

888588 : Safe is closed.

888888 : Battery is full.

888808 : Battery is empty.

888888 : Wrong password.

888888 : Fail to open.

888882 : Fail to close.

888888 : Alarm set.

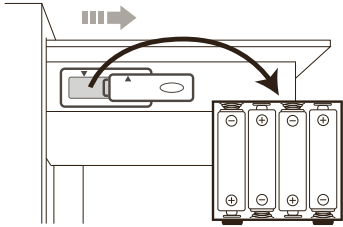
888088 : Alarm unset.

808888 : Paralyzed 5min.

1 Installing Batteries

Before using your safe, please insert batteries. (1.5V AA batteries 4pcs)

1. Slide battery case cover on door top of safe to the right to take out the battery case.
2. Install batteries in compartment as illustrated. (*SEEBEE* & *890088* appear on LED display.)

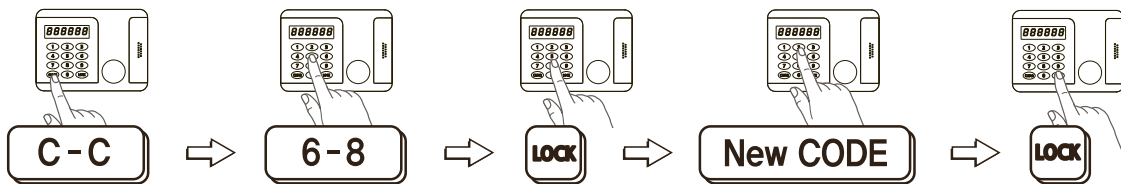


- Even if batteries are completely exhausted, user code never erases.
- When pressing “#” button in closed state, *8888* or *8880* appears on LED display depending on battery power.
- When *8880* appears on LED display, please replace all batteries.

2 Setting User Code

Set your user code when safe is open.

1. Press “C-C” buttons consecutively. (*8888* appears on LED display.)
2. Press “6-8-LOCK” buttons consecutively. (*888* appears on LED display.)
3. Input new code (4~6 digit) and press “LOCK” button.



- Please check whether your new code was properly registered by opening door with your new code before closing the door.

3 Opening Safe

1. Input your code.
2. Door automatically opens. (*0PEEE8* appears on LED display.)

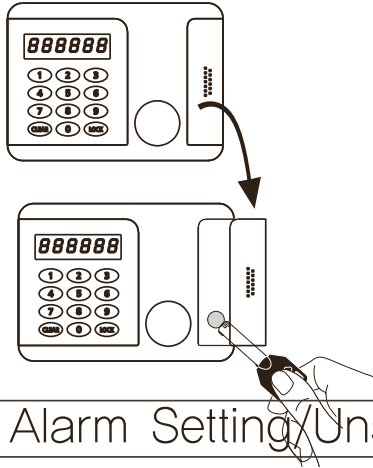
- If you input wrong code, *88888* appears on LED display.
- If wrong codes tried over 5 times, lock gets paralyzed for 5 minutes.
- If *888888* appears on LED display, input your code again with keeping door closed.

4 Closing safe

1. Keeping door closed, Press “LOCK” button.
2. Safe automatically closes. (*800588* appears on LED display.)

- If *888888* appears on LED display, press “#” button again with keeping door closed.

5 Opening Safe with Override Key



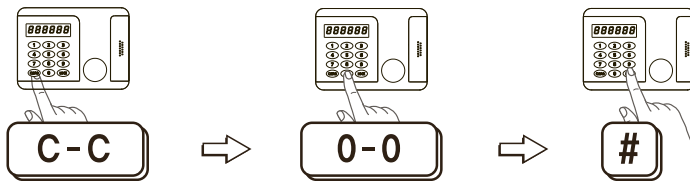
If you forget your code or batteries are low, you may open your safe using override key.

1. Open the digital lock cover.
2. Insert key and turn clockwise

- You can't put out the key when safe is open.
Turn key counterclockwise and take it out.
- Please keep override key apart from your safe.

6 Alarm Setting/Unsetting

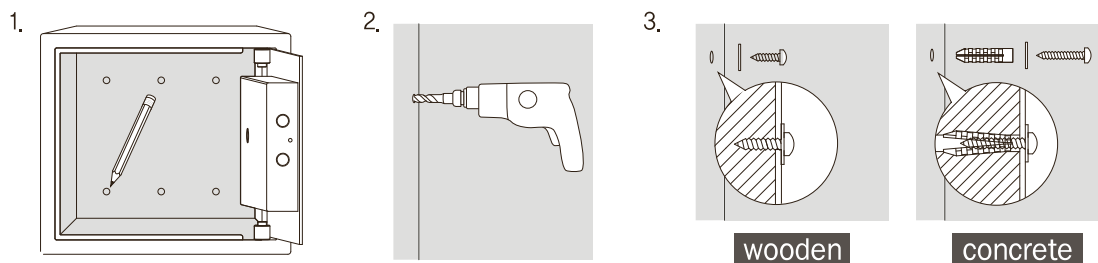
- Once alarm system is affected by shock or tilt, it makes horn immediately.
 - When Alarm system is set on, some impacts to the safe may cause alarm horning.
 - Motion sensor may respond to all kinds of movements.
1. Press "C-C" buttons consecutively. (**8888** appears on LED display.)
 2. Press "0-0-**LOCK**" buttons. Alarm is set or unset. (**8888** or **88888** appears on LED display.)



- The battery life span is 1year.
Battery must be replaced if alarm horns more than 30min.

7 Securing Safe on Floor or Wall

1. Place safe where you want to secure it and mark securing hole to drill.
2. Make hole with drill by $\Phi 3$ wooden floor/wall or $\Phi 6.5$ on concrete floor/wall.
3. Place safe at right position and secure it using screw and washer. (On concrete floor/wall, insert plastic expanding sleeves into the drilled holes)



Version 1 - P3 - 25/4/2024

 **BURTON**
SECURITY

www.burtonsafes.co.uk | +44 (0) 1484 663388 | enquiries@burtonsecurity.com
Brockholes Business Park, Rock Mill Road, Holmfirth, HD9 7BN